

On the Sunny Side of the Street

Grab your coat, and get your hat,

Leave your wor-ry on the door step;

Just di-rect your feet o the Sun-ny side of the street.

Can't you hear a pit-ter pat? And that hap-py tune is your step.

Life can be so sweet On The Sun-ny Side of the Street.

I used to walk in the shade With those blues on pa-rade,

But I'm not a-fraid. This ro-ver crossed o-ver.

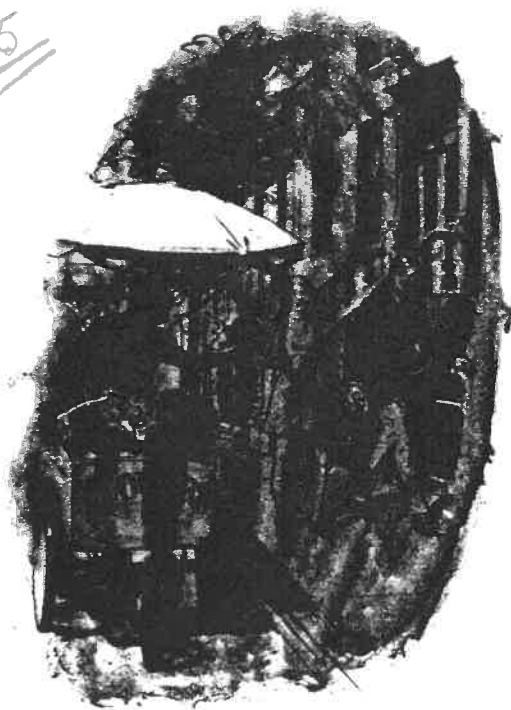
If I nev-er have a cent, I'll be rich as Rock-e-fel-ler,

Gold dust at my feet On the Sun-ny Side of the Street.

Two times

15

On the Sunny Side of the Street

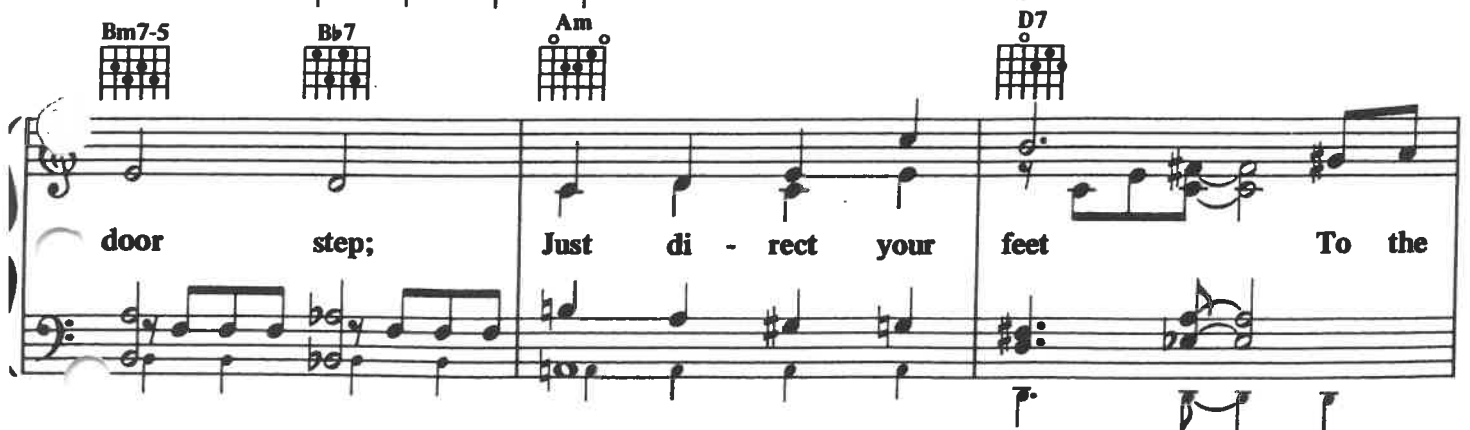
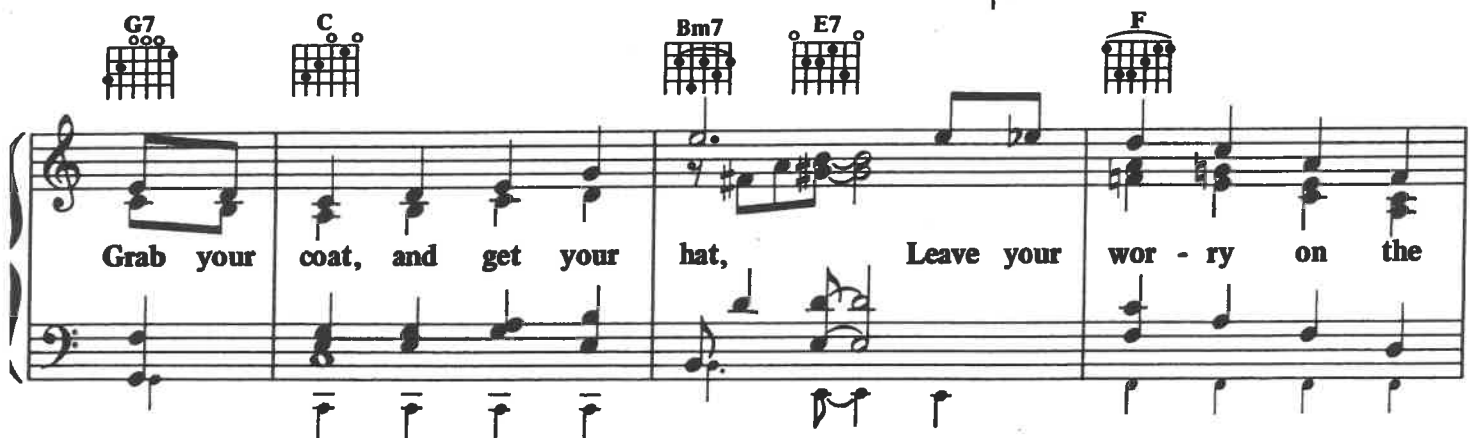


For some reason, male songwriters far outnumber the women. But few men have matched the success of lyricist Dorothy Fields, of the show-business Fields family. (Her father was Lew Fields, the "Dutch" comedian of Weber and Fields fame; her brother is Herbert Fields, author of Broadway musicals.) She first collaborated with Jimmy McHugh in the hit-studded Blackbirds of 1928. The following year the same team produced this song, as well as "Exactly Like You," for Lew Leslie's International Revue. "On the Sunny Side of the Street" was introduced in the show by Harry Richman.

Words by: Dorothy Fields

Music by: Jimmy McHugh

Moderately, with a lift



sun - ny side of the street. Can't you hear a pit - ter

pat? And that hap - py tune is your step.

Life can be so sweet On The Sun - ny Side Of The

Street. I used to walk in the shade With those

blues on pa - rage, But I'm not a -

D7  **G7**  *as before*

fraid. This ro - ver crossed o - ver. If I

8va bassa

C  **Bm7**  **E7**  **F** 

nev - er have a cent I'll be rich as Rock - e -

Bm7-5  **Bb7**  **Am**  **D7** 

fel - ler, Gold dust at my feet On The

Fmaj7/Gbass  **G13**  **C** 

Sun - ny Side Of The Street.

